



GAT MONTHLY MEMBERSHIP PROGRESS REPORT

Results as of: 9/30/2022

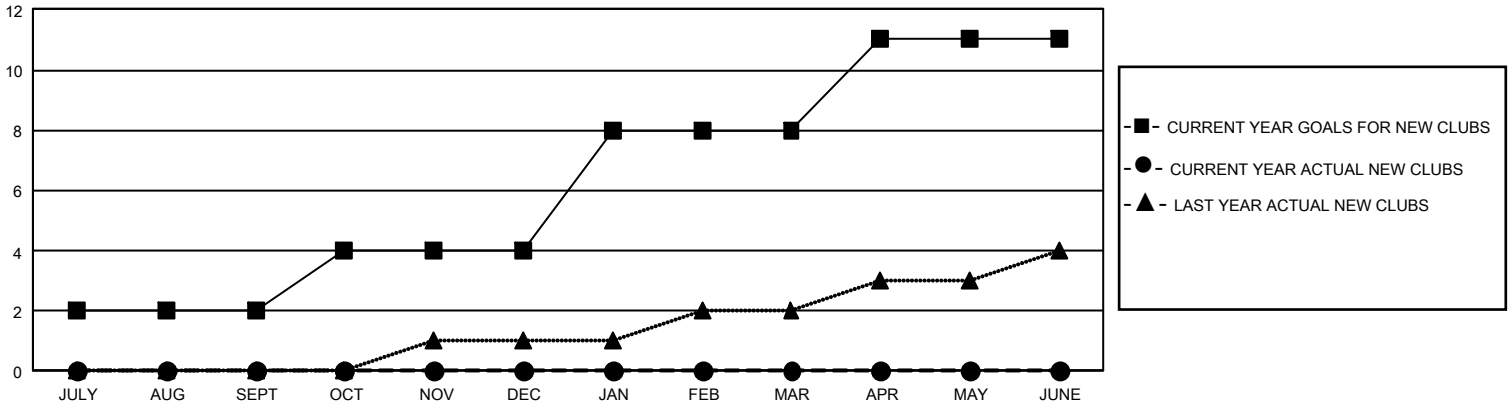
GMT Constitutional Area 5 - J, Group J

REPORT DOES NOT INCLUDE CLUBS IN UNDISTRICTED AREAS.

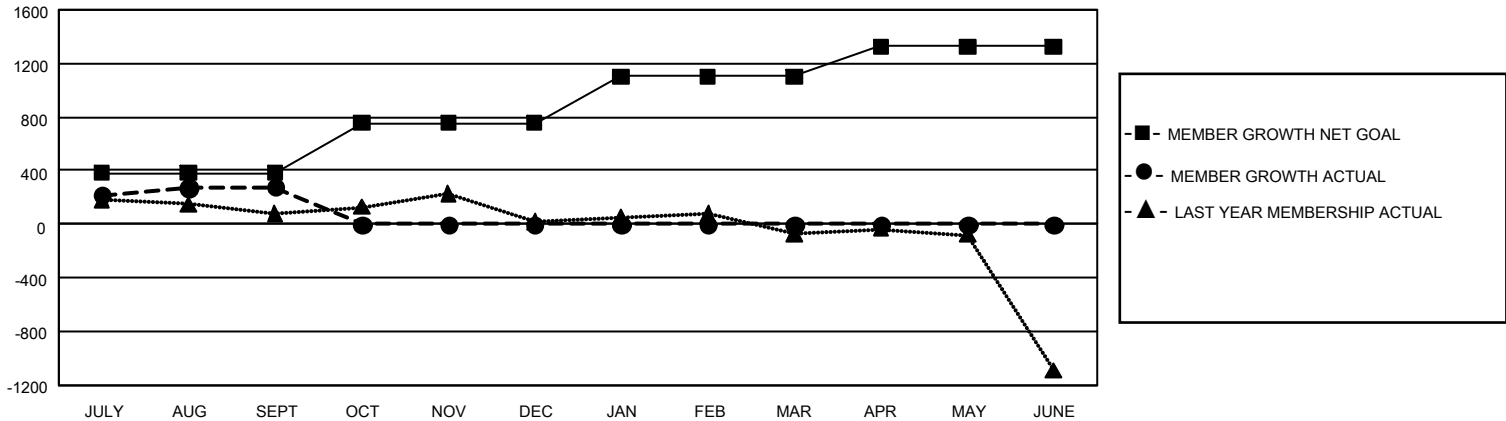
Clubs			
RESULTS FOR 2022-2023			
QUARTER	NEW CLUB GOAL	NEW CLUBS	DROPPED CLUBS
JULY/AUG/SEPT	6	0	1
OCT/NOV/DEC	6	0	0
JAN/FEB/MAR	12	0	0
APR/MAY/JUNE	9	0	0

Members			
RESULTS FOR 2022-2023			
QUARTER	MEMBER GROWTH NET GOAL	MEMBER GROWTH ACTUAL	DROPPED MEMBERS ACTUAL (including transfers)
JULY/AUG/SEPT	381	800	471
OCT/NOV/DEC	375	0	0
JAN/FEB/MAR	345	0	0
APR/MAY/JUNE	225	0	0

GOALS AND ACTUAL NEW CLUBS CUMULATIVE



GOALS AND ACTUAL MEMBERS CUMULATIVE



DROPPED CLUBS: 1	355 CLUBS OF 754 ADDED 1 OR MORE NEW MEMBERS	<u>GENDER DISTRIBUTION</u>	
<u>DROPPED MEMBERS</u>		MALE	21,267 (78.79%)
DECEASED	58	FEMALE	5,721 (21.19%)
CLUB CANCELLED	0	NON BINARY	0 (0.00%)
OTHER	413	PREFER NOT TO ANSWER	5 (0.02%)
TOTAL	471	TOTAL FAMILY UNIT MEMBERS	7,136
	CLICK HERE FOR CUMULATIVE MEMBERSHIP DATA	FAMILY MEMBERS PAYING HALF DUES	3,900